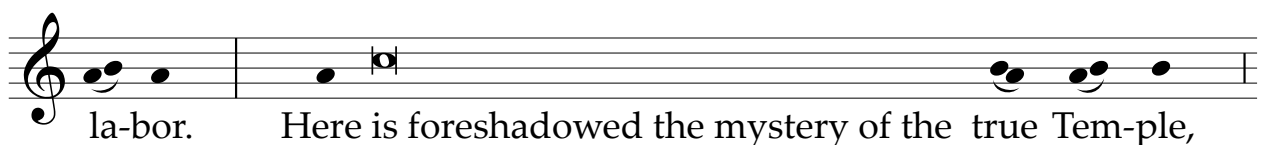
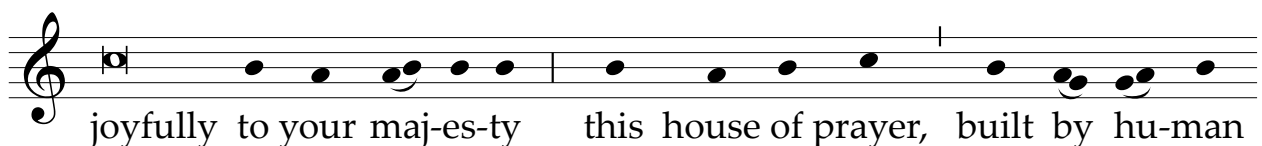
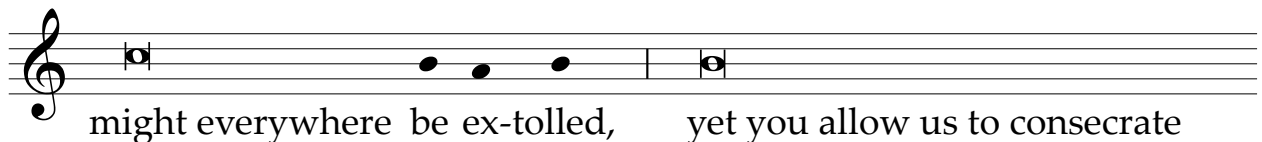
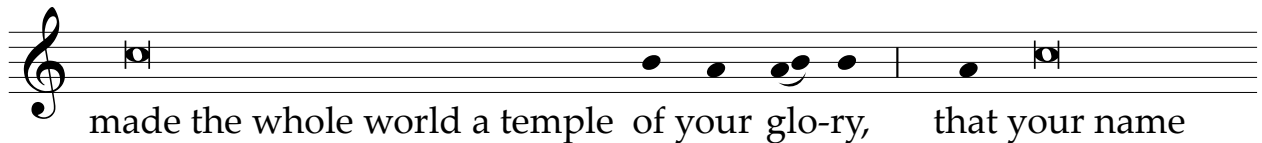
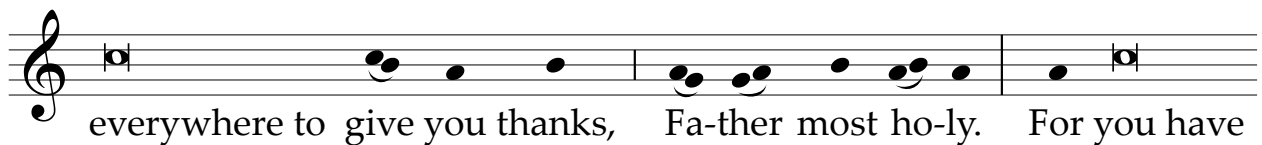
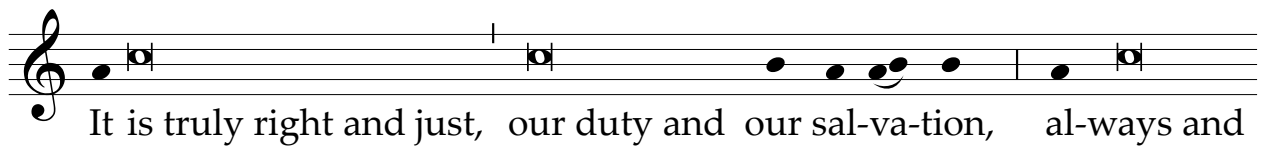
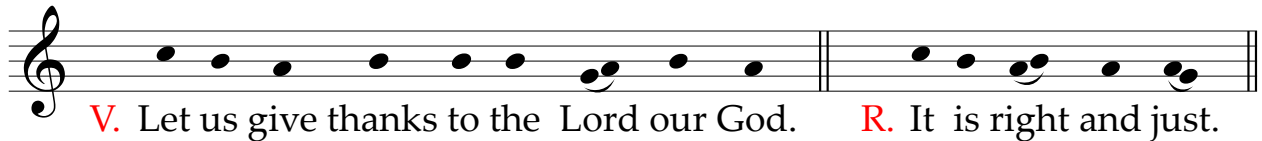
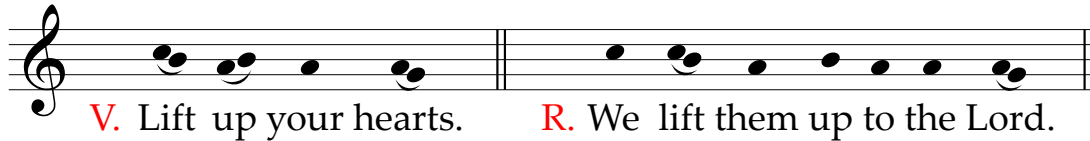


THE DEDICATION OF A CHURCH

The mystery of God's Temple



the Body of your Son, born of the tender Virgin, the Temple conse-
-crat-ed to you, in which the full-ness of the God-head might dwell.
You also established the Church as a ho-ly cit-y, built upon the
foundation of the A-pos-tles, with Christ Jesus him-self the chief
cor-ner-stone: a city to be built of cho-sen stones, giv-en life by
the Spirit and bond-ed by char-i-ty, where for endless ages you
will be all in all and the light of Christ will shine un-dimmed for
ev-er. Through him, O Lord, with all the An-gels and Saints, we
give you thanks, as in exul-ta-tion we ac-claim: